

ASPROMUS[®]

2407EFB

Medical Spa Treatment Chair



Aspromus, a division of Silverfox

www.aspromus.us

info@silverfoxamerica.com



RoHS

New Ultra-thin Base Series:

Defining a new aesthetic style

1 Easily Detachable



Modular design allows quick disassembly and cushion color replacement



Medical-grade, stain-resistant silicone leather for easy disinfection and cleaning

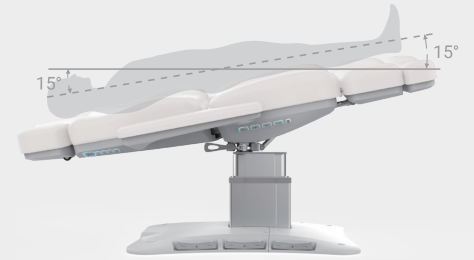


2 Robust Foundation

Features a professional-grade, three-stage square lift column engineered for ultimate stability and durability, forming the bedrock of reliable performance.

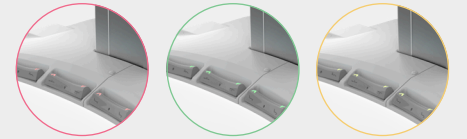
3 Trendelenburg Position

This position design fully prioritizes client comfort, surgical outcomes, and intraoperative safety.



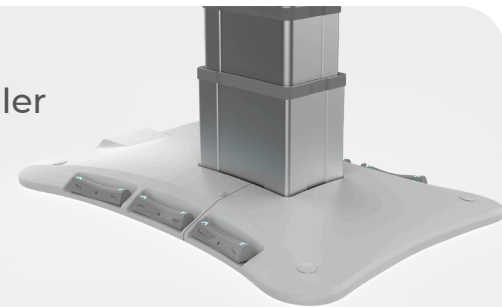
4 Adjustable Ambient Lighting

Integrated multi-color adjustable ambient lighting enhances the customer experience.



5 Built-in Foot Controller and Side Buttons

Fully illuminated side buttons and built-in foot controller ensure error-free operation.



6 Intelligent Memory System

Advanced smart memory and control system for effortless operation.



Unparalleled User Experience



Flexible Configuration for Multiple Scenarios

Two adjustable height ranges are available to meet the precise demands of various treatments and services:



Option 1: 18-28 inches (48-72 cm)
ADA compliant, without electric rotation.



Option 2: 24-36 inches (61.5-93.5 cm),
equipped with practical electric rotation.

Specifications

Voltage :	AC 100-120V or AC 220-240V
Frequency :	50 / 60Hz
Max load bearing :	200 kg / 440 lbs
Net weight:	99 kg / 218 lbs
Gross weight:	113.5 kg / 250 lbs
Package size:	1420x810x580 (mm) \approx 0.67m ³ 56x32x22.8 (in) \approx 40885in ³
Product size(L*W*H) :	1810x859x480 / 720 (mm) 71.3x33.8x18 / 28 (in)

Standard Configuration



Max Load Bearing



Swivel



Angle adjustable headrest



Memory System



Reset



Lock



Medical Headrest



Side Control Button



Built-in Foot Controller



Hand Controller



Microfiber Upholstery



Foot Cover

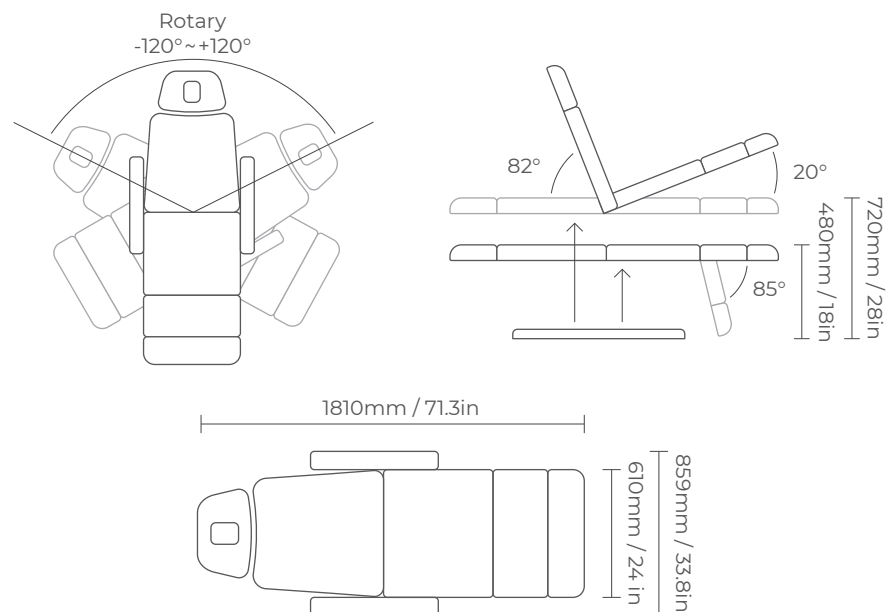


Paper Holder

Options

Unit

mm / in



➤ Premium Silicone Upholstery

Full Grain



➤ Medical-grade, Stain-resistant Silicon Leather

Our silicone leather combines the premium feel of real leather with unmatched, easy-clean durability.

Effortless Cleanup: Simply wipe away everyday spills with mild soap and water. That's all it takes.

Bleach-Safe: Disinfect thoroughly with a diluted bleach solution (10%) to eliminate germs.

Alcohol-Resistant: Wipe down with 75% alcohol sanitizers for quick cleaning without damage.

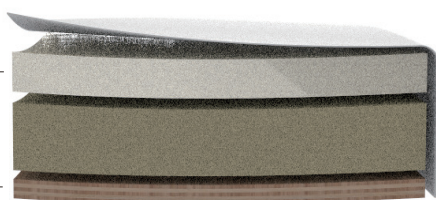
➤ Sponge Dissection Diagram

Leather

Low Hardness Foam

High Firmness Foam

Laminate Support



➤ Specifications

•Material Composition

Surface: 100% Silicone
Backing: Polyester

•Inherent Flame Resistance

FMVSS 302
BS5852 Crib 5

•Color Fastness

Light AATCC16.3 200h: Grade 3-4
Crocking AATCC8 Wet & Dry: Grade 5
Perspiration AATCC15: Grade 5

•Stain Resistance

CFFA-141,Excellent

•Physical Performance

Wyzenbeek Abrasion:100,000 double rubs
UV Stability ASTM D4329-05
Flex Resistance ASTM D2097-91
Hydrolysis Resistance ASTM D3690-02
Cold Crack Resistance CFFA-6
Salt Spray Resistance ASTM B117
Low-temp Flex Resistance ISO 17694
Odorless

•Sustainability

VOCs Free
Recyclable
RoHS 2.0 / REACH / Prop 65
Advanced Solvent Free Technology
No Toxic By-products
No Formaldehyde, Lead, PFC,Antimony Trioxide, Tri
No Plasticizers, Phthalates,Heavy Metals, BPA
No Harm to Air or Water

•Biocompatibility

Repeated Stimulation: ISO 10993-10:2010 Level 0
Sensitization: ISO 10993-10:2010 Level 0
Cytotoxicity: ISO 10993-5:2009 Level 1



*Actual colors may differ slightly from those displayed in images.